

Did you know...

- Versalift® offers more than 30 lift-mounted models for chassis mounting.
- Versalift® offers lifts with working heights from 9 – 35 m.
- Versalift® offers up to 420KV-insulated lifts on chassis.
- Versalift® offers more than 8 models on 3.5 T chassis.
- Versalift® offers "Quick-shift" mounting systems for Unimog and Multicar.
- Versalift® introduced the Walk-in platform, with direct access to the platform, in 1987.
- Versalift® received a patent for a newly developed axle lock system in 2002.
- Versalift® offers ADS (Access Drive System) from the lift platform.
- Versalift® is also mounted on natural gas-powered chassis.
- Versalift® offers A, H and Radial outriggers.
- Versalift® offers hybrid lifts.



We have the right vehicle for the job

3 in 1: The combination of an aerial lift on a chassis with a rolling workshop greatly increases efficiency in completing tasks
 The comprehensive Versalift® product line offers working heights from 9 m to 22 m when mounted on a chassis with a curb weight (GVW) between 3.5 tons and 26 tons. The large selection of options ensures that the final product will be just right for the job at hand.

Lift options:

- 180° platform rotation
- 230V on-platform power point
- 12V/230V transformer
- OOS: Optimized horizontal outreach
- VTC: CanBus proportional steering
- Extra safety equipment

Vehicle mounting options:

- ALS: Patented axle lock system
- Aluminum tool box
- Fiberglass boxes
- Fiberglass tool box
- Lights, projectors, etc.
- Extra safety equipment

Workshop furnishing options:

- Mobile or stationary drawers and cupboards
- Louvre doors, swinging or sliding doors
- Lighting

We also mount lifts on vans with working heights from 9 to 18 m., as well as AUS-insulated lifts from 12 to 65 m.



TIME was founded in 1965 and is considered an industry pioneer. In 1976, the company was bought by O'Flaherty Holdings Limited, Dublin, Ireland.

Versalift® lifts are the result of continual engineering development and market studies. **TIME** Manufacturing Company has the goal of producing models with the characteristics that fill the market's needs in a heavily competitive industry.

TIME is the world's leading producer of aerial work platforms. **TIME** Manufacturing Company is located in Waco, Texas, U.S.A.

They specialize in the production of vehicle mounted lifts. The company is divided in two divisions, Versalift and Condor.

Versalift® meets ANSI standards and is CE approved, and we are certified according to ISO 9001 and ISO 14001 standards. Commitment to quality, de-

sign, construction and customer service are keywords for **TIME** Manufacturing Company.

Versalift® lifts are among the world's most sold truck-mounted lifts with working heights from 9 m - 35 m, "live-line"-insulated and low-voltage insulated. Versalift® lifts are the world's most sold van-mounted aerial work platform.

Since 1965, Versalift has produced and sold more than 90,000 Versalifts the world over. Yearly production is appx. 4000 lifts, and lifts have been sold in more than 150 countries. The Versalift division has more

than 400 employees at the factory in Waco. Condor® lifts are truck-mounted lifts from 27 m - 65 m, which are AUS-insulated up to 750 KV.

Condor® was produced by Calavar in California until 1991, when O'Flaherty Holding bought the company and moved production to **TIME** Manufacturing Company in Waco, Texas.

TIME International is the export division of Time Manufacturing Company. The division is located in Farsø, Denmark and deals with the export of more than 1000 lifts yearly to countries outside of North,

Central, and South America. This export is based on a worldwide network of dealerships, which sell with reference to the export division in Denmark.

TIME Denmark, which is located the same place as Time International in Farsø, builds more than 100 lifts yearly on chassis and vans for, among others, the Scandinavian countries, Germany, Holland and Belgium. These are primarily workshop furnished, fully equipped, turn-key lift vehicles for delivery to the energy sector.

Versalift® is known as a reliable, high quality product with low maintenance costs.

TIME MANUFACTURING COMPANY - VERSALIFT DIVISION



TIME MANUFACTURING COMPANY - CONDOR AND TRUCK MOUNTING DIVISION



TIME INTERNATIONAL - SALES OFFICE

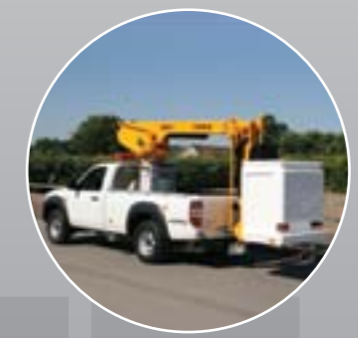


TIME DANMARK - VAN AND TRUCK MOUNTING



Chassis-mounted Aerial Access platforms

OVERVIEW



INTERNATIONAL A/S
 SØNDERVANG 3 · DK-9640 FARSØ
 PHONE: +45 98 63 24 33 · FAX: +45 9863 2483
 SALES@TIMEINTL.DK · WWW.TIMEINTL.DK

MANUFACTURING COMPANY
 7601 IMPERIAL DRIVE
 WACO 76702-0368 · TEXAS · USA
 PHONE: 1 254 399 2100 · FAX: 1 254 399 2650
 WWW.TIMEMFG.COM

Chassis-mounted Aerial Access Platforms

OVERVIEW



CHASSIS	LT-23-TB	LT-30-TB	TEL-35-LE	LAT-39-TB
Working height	9.2 m	11.0 m	12.2 m	14.3 m
Platform height	7.2 m	9.0 m	10.2 m	12.3 m
Max. outreach	4.4 m*	6.3 m*	5.5 m*	7.3 / 6.7 m*
Max platform capacity	200 kg	200 kg	200 / 120 kg	200 / 250 kg
Flyboom	-	-	-	-
MH-Jib / winch	N/A	N/A	N/A	N/A
MH capacity	-	-	-	-
Min. GVW	3.000 kg	3.000 kg	3.000 kg	3.500 kg
Approval	CE	CE	CE	CE
Note	*Depending on chassis			



CHASSIS	LT-62-LE	ET-32-LF XS	ET-32-LF XS	ET-36-LF ECO
Working height	21.0 m	11.6 m	11.6 m	12.8 m
Platform height	19.0 m	9.6 m	9.6 m	10.8 m
Max. outreach	8.5 / 11.0 m*	6.0 m*	6.0 m*	6.8 m*
Max platform capacity	200 / 120 kg	120 kg	200 / 120 kg	200 / 120 kg
Flyboom	-	90°	110°	110°
MH-Jib / winch	N/A	N/A	N/A	N/A
MH capacity	-	-	-	-
Min. GVW	3.500 kg	3.000 kg	3.500 kg	3.500 kg
Approval	ANSI/CE	CE	CE	CE
Note	*Depending on chassis			



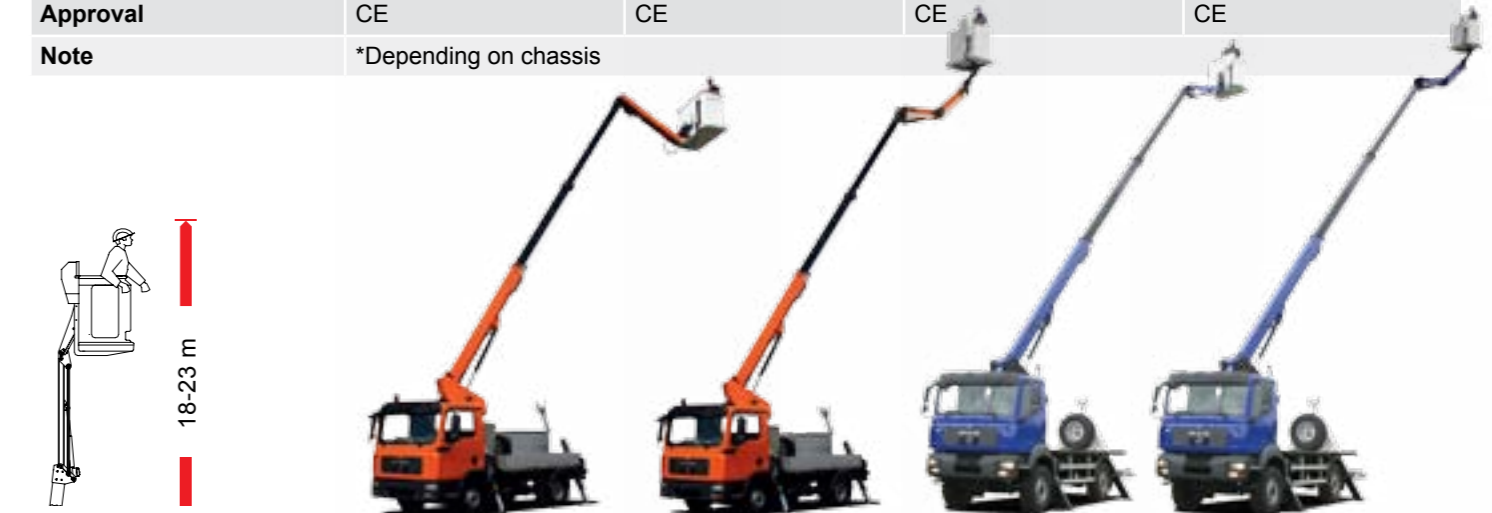
CHASSIS	VST-244-LF	ET-46-LFHDZ	VT-51-LF	VT-55-LFZ
Working height	15.7 m	16.0 m	17.2 m	18.2 m
Platform height	13.7 m	14.0 m	15.2 m	16.2 m
Max. outreach	11.0 / 10.0 m*	8.0 / 7.0 m*	11.0 / 10.0 m*	11.0 / 10.0 m*
Max platform capacity	200 / 265 kg	200 / 265 kg	200 / 265 kg	200 / 265 kg
Flyboom	180°	135° Z	180°	135 Z°
MH-Jib / winch	N/A	N/A	N/A	N/A
MH capacity	-	-	-	-
Min. GVW	10.500 kg	5.000 kg	7.500 kg	7.500 kg
Approval	CE	CE	CE	CE
Note	*Depending on chassis			



CHASSIS	VST-43-TN	VST-50-TN	VST-55-TN	LT-56-LE
Working height	15.3 m	17.2 m	18.3 m	19.0 m
Platform height	13.3 m	15.2 m	16.3 m	17.0 m
Max. outreach	9.6 m*	9.8 m*	9.7 m*	8.5 / 11.0 m*
Max platform capacity	200 kg	200 kg	200 kg	200 / 120 kg
Flyboom	-	-	-	-
MH-Jib / winch	STD	STD	STD	N/A
MH capacity	90 kg	90 kg	90 kg	-
Min. GVW	7.490 kg	7.490 kg	10.000 kg	3.500 kg
Approval	ANSI/CE	ANSI/CE	ANSI/CE	ANSI/CE
Note	*Depending on chassis			



CHASSIS	VST-237-LF	ET-38-LF HD	ET-40-LF HD	VST-241-LF
Working height	13.7 m	13.9 m	14.5 m	15.0 m
Platform height	11.7 m	11.9 m	12.5 m	13.0 m
Max. outreach	9.0 / 8.0 m*	9.0 / 8.0 m*	9.0 / 8.0 m*	9.0 / 8.0 m*
Max platform capacity	200 / 265 kg	200 / 265 kg	200 / 265 kg	200 / 265 kg
Flyboom	180°	180°	180°	180°
MH-Jib / winch	N/A	N/A	N/A	N/A
MH capacity	-	-	-	-
Min. GVW	12.000 kg	7.490 kg	7.490 kg	10.500 kg
Approval	CE	CE	CE	CE
Note	*Depending on chassis			



CHASSIS	VT-54-LF	VT-57-LFZ	VT-66-LF	VT-69-LFZ
Working height	18.3 m	19.3 m	21.8 m	22.8 m
Platform height	16.3 m	17.3 m	19.8 m	20.8 m
Max. outreach	11.0 / 10.0 m*	11.0 / 10.0 m*	11.0 / 10.0 m*	11.0 / 10.0 m*
Max platform capacity	200 / 265 kg	200 / 265 kg	200 / 265 kg	200 / 265 kg
Flyboom	180°	135 Z°	180°	135 Z°
MH-Jib / winch	N/A	N/A	N/A	N/A
MH capacity	-	-	-	-
Min. GVW	7.500 kg	7.500 kg	7.500 kg	7.500 kg
Approval	CE	CE	CE	CE
Note	*Depending on chassis			